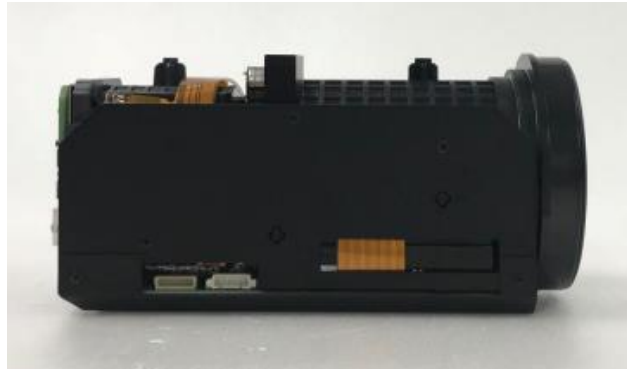


CBM31265AF

1/1.8" Global Shutter CMOS x31 Zoom/AF Camera Module



Specifications

Sensor	Image Sensor	1/1.8" Global Shutter CMOS Image Sensor (IMX265 LQR-C)
	Number of pixels	2064(H) x 1554(V)
	Pixel Size	3.45 μ m(H) x 3.45 μ m(V)
	Scan Format	1920x1080@30fps, 1920x1080@25fps, 1920x1080@60fps, 1920x1080@50fps (Option 1920x1080@29.97fps, 1920x1080@59.94fps)
Lens	F No.	Wide: F1.55, Tele: F4.80
	Focal Length	Wide (x1) :6.5mm, Tele (x31) : 202mm
	Zoom	Optical Zoom 1~31times : Stepping Moter Digital Zoom 1~32 times : (Optical + Digital Zoom Max : 992 times)
	Focus	Stepping motor system auto focus Focus range : Wide 2.0m~ ∞ , Tele 2.0m~ ∞
	Optical Arange of view	Wide (x1) : D/59.6 $^{\circ}$, H/54.4 $^{\circ}$, V/31.5 $^{\circ}$ Tele (x31) : D/2.1 $^{\circ}$, H/1.9 $^{\circ}$, V/1.0 $^{\circ}$
	Optical Filter (Triple ICR)	1: IR Cut Filter (for Day Color) 2: NIR Filter 3: Through Glass
Video	Video Format	HD-SDI : 1080p30, 1080p25, 1080i60, 1080i50, 720p60, 720p50, 720p30, 720p25 (Option 1080p29.97, 1080i59.94, 720p59.94, 720p29.97)
		LVDS : 1080p30, 1080p25, 1080i60, 1080i50, 720p60, 720p50, 720p30, 720p25 (Option 1080p29.97, 1080i59.94, 720p59.94, 720p29.97)
		VBS : NTSC, PAL
	Minimum Illumination	Color 0.02 lx B/W 0.01 lx, F1.5, 25 IRE, AGC 42dB
Signal to Noise Ratio	STD 52dB (Minimum 48dB)	
Function	Setting	OSD, UART(2ch)
	Auto Iris	Yes
	Auto Exposure	Yes
	Auto Focus	Yes
	White Balance	AUTO / ATW / AWB (One Push)
	Manual Shutter	1/30(25), 1/50, 1/60, 1/100, 1/120, 1/150, 1/180, 1/250, 1/350, 1/500, 1/750, 1/1000, 1/2000, 1/4000, 1/10000, 1/34000, 1/78000 sec.
	Sense Up	AGC Max 60dB & Slow Shutter Max 8 sec.
	Day & Night Mode	Color / B&W / Auto / External
	Digital Noise Reduction	2D + 3D (Coupled Motion ON/OFF)
	Backlight Control	Yes
	Peak / Average Control	Yes
	Gamma Control	0.45 ~ 1.00 (Auto Setup ON/OFF)
	Wide Dynamic Range	XDR, D-WDR, V-WDR
	Eclipse (High Light Clip)	Yes
	Fog Reduction	Yes
	Heat Haze Correction	Yes
	Motion Detection	Yes
	H/V Mirror, Flip	Yes
	OSD Language	English, Japanese (Customizable)
	Title Display	Yes
Communication Protocol	Original / Pelco-D / Pelco-P / VISCA	
Privacy Mask	Yes (16 Masks)	
Preset Position	Yes (64 Area)	
Synchronous Mode	Internal	
General	Power Source	DC+12V
	Consumption Current	420mA (30fps)
	Operation Temperature	-10 $^{\circ}$ C ~ +50 $^{\circ}$ C
	Storage Temperature	-30 $^{\circ}$ C ~ +70 $^{\circ}$ C
	Humidity	80% Max
	Dimensions	W63mm x H66mm x D135mm
Net Weight	440g	

Pin Assignment

JP1 (USL00-30L-A/KEL)		
1	TXout3+	LVDS TXD3+
2	TXout3-	LVDS TXD3-
3	TXCLKout+	LVDS TXCLK+
4	TXCLKout-	LVDS TXCLK-
5	TXout2+	LVDS TXD2+
6	TXout2-	LVDS TXD2-
7	TXout1+	LVDS TXD1+
8	TXout1-	LVDS TXD1-
9	TXout0+	LVDS TXD0+
10	TXout0-	LVDS TXD0-
11	GND	Ground
12	TXD1	UART TX (5V)
13	RXD1	UART RX (5V)
14	DC12in	12V DC
15	DC12in	12V DC
16	DC12in	12V DC
17	DC12in	12V DC
18	DC12in	12V DC
19	GND	Ground
20	GND	Ground
21	GND	Ground
22	GND	Ground
23	GND	Ground
24	GND	Ground
25	-	Reserved
26	-	Reserved
27	VBS	Analog Video
28	-	Reserved
29	-	Reserved
30	RS485EN1	RS485 Enable (5V)

JP2 (53261-0671/MOLEX)		
1	DC12in	12V DC
2	GND	Power Ground
3	VBS	Analog Video
4	GND	Video Ground
5	IRext	ICR Control
6	VDO	Sensor VD Pulse

JP3 (SM06B-SRSS-TB/JST)		
1	ENTER	OSD Enter
2	RIGHT	OSD Right
3	LEFT	OSD Left
4	UP	OSD Up
5	DOWN	OSD Down
6	GND	Ground

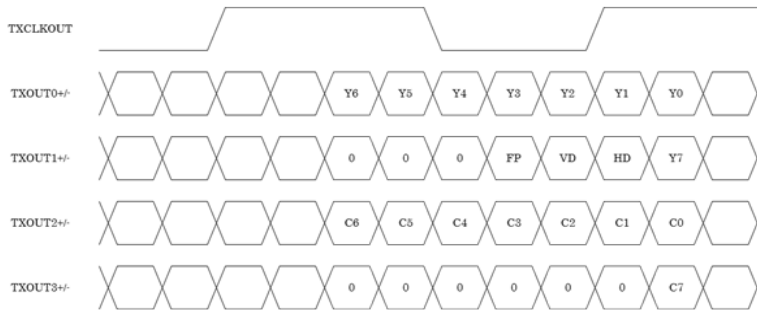
JP4 (SM05B-SRSS-TB/JST)		
1	GND	Ground
2	TXD2	UART TX (3.3V)
3	RXD2	UART RX (3.3V)
4	DC33out	3.3V DC
5	RS485EN2	RS485 Enable (3.3V)

JP8 (AYU1-1P-02676-120/JST)		
1	TX-SDI	SDI TX
2	GND	Video Ground

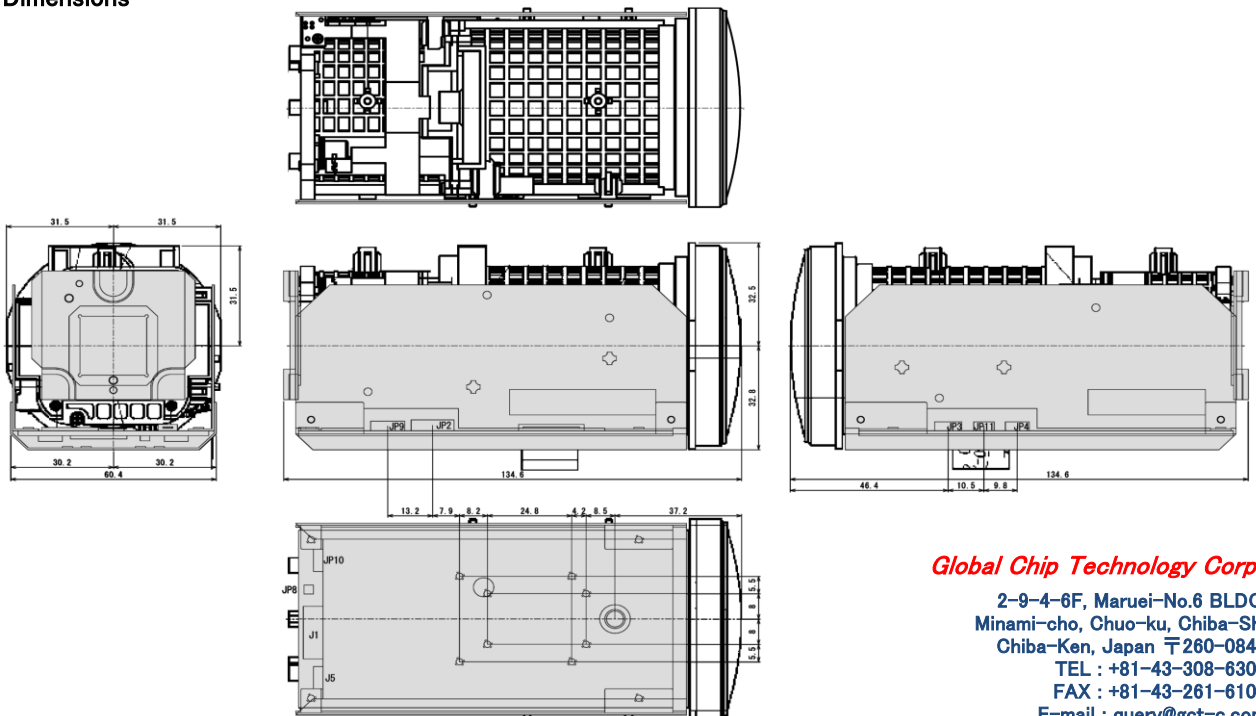
JP11 (SM04B-SRSS-TB/JST)		
1	DC33out	3.3V DC
2	ARin	Audio R
3	ALin	Audio L
4	AGND	Ground

(Option)

LVDS Format



Dimensions

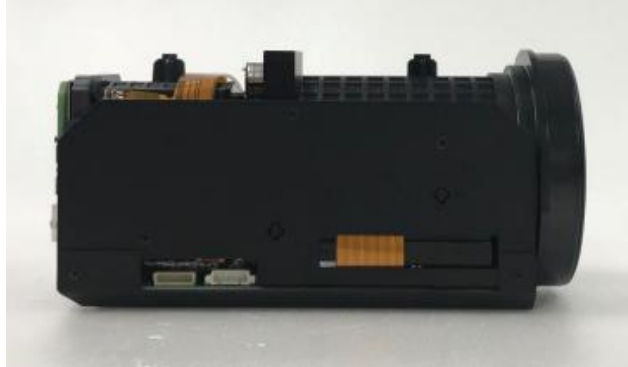


Global Chip Technology Corp.

2-9-4-6F, Maruei-No.6 BLDG.
 Minami-cho, Chuo-ku, Chiba-Shi
 Chiba-Ken, Japan 〒260-0842
 TEL : +81-43-308-6300
 FAX : +81-43-261-6100
 E-mail : query@got-c.com

CBM31265AF

1/1.8" グローバルシャッターCMOS 31倍Zoom/AF カメラモジュール



■モジュール仕様

センサー	イメージ センサー	1/1.8" Global Shutter CMOS Image Sensor (IMX265 LQR-C)
	画素数	2064(H) x 1554(V)
	ピクセルサイズ	3.45 μ m(H) x 3.45 μ m(V)
	スキャンフォーマット	1920x1080@30fps, 1920x1080@25fps, 1920x1080@60fps, 1920x1080@50fps (Option 1920x1080@29.97fps, 1920x1080@59.94fps)
レンズ	F ナンバー	Wide: F1.55, Tele: F4.80
	焦点距離	Wide (x1) :6.5mm, Tele (x31) : 202mm
	ズーム	Optical Zoom 1~31times : Stepping Moter Digital Zoom 1~32 times : (Optical + Digital Zoom Max : 992 times)
	フォーカス	Stepping motor system auto focus Focus range : Wide 2.0m~ ∞ , Tele 2.0m~ ∞
	画角	Wide (x1) : D/59.6 $^{\circ}$, H/54.4 $^{\circ}$, V/31.5 $^{\circ}$ Tele (x31) : D/2.1 $^{\circ}$, H/1.9 $^{\circ}$, V/1.0 $^{\circ}$
	光学フィルター (3-ICR)	1: IR Cut Filter (for Day Color) 2: NIR Filter 3: Through Glass
ビデオ	ビデオフォーマット	HD-SDI : 1080p30, 1080p25, 1080i60, 1080i50, 720p60, 720p50, 720p30, 720p25 (Option 1080p29.97, 1080i59.94, 720p59.94, 720p29.97) LVDS : 1080p30, 1080p25, 1080i60, 1080i50, 720p60, 720p50, 720p30, 720p25 (Option 1080p29.97, 1080i59.94, 720p59.94, 720p29.97) VBS : NTSC, PAL
	被写体最低照度	Color 0.02 lx B/W 0.01 lx, F1.5, 25 IRE, AGC 42dB
	信号対ノイズ比	STD 52dB (Minimum 48dB)
	制御設定	OSD, UART(2ch)
機能	オートアイリス	有
	オート電子シャッター	有
	オートフォーカス	有
	ホワイトバランス	AUTO / ATW / AWB (One Push)
	マニュアル電子シャッター	1/30(25), 1/50, 1/60, 1/100, 1/120, 1/150, 1/180, 1/250, 1/350, 1/500, 1/750, 1/1000, 1/2000, 1/4000, 1/10000, 1/34000, 1/78000 sec.
	感度設定	AGC Max 60dB & Slow Shutter Max 8 sec.
	デイ/ナイト機能	カラー / B&W / Auto / 外部
	デジタルノイズリダクション	2D + 3D (Coupled Motion ON/OFF)
	逆光補正機能	有
	ピーク/平均値設定	有
	ガンマ補正	0.45 ~ 1.00 (Auto Setup ON/OFF)
	ワイドダイナミックレンジ設定	XDR, D-WDR, V-WDR
	ハイライト部輝度 (Eclipse)設定	有
	霧補正	有
	陽炎補正	有
	モーションディテクション	有
	ミラー反転、フリップ反転	有
	OSD 言語	英語, 日本語 (カスタマイズ可能)
	タイトル表示	有
	通信フォーマット	Original / Pelco-D / Pelco-P / VISCA
ブライバシマスク	有 (16マスク)	
プリセットポジション	有 (64箇所)	
同期方式	Internal	
一般	入力電圧	DC+12V
	消費電流	420mA (30fps)
	動作温度	-10 $^{\circ}$ C ~ +50 $^{\circ}$ C
	保管温度	-30 $^{\circ}$ C ~ +70 $^{\circ}$ C
	環境湿度	80% Max
	外形寸法	W63mm x H66mm x D135mm
	重量	440g

■ピン配置

JP1 (USL00-30L-A/KEL)		
1	TXout3+	LVDS TXD3+
2	TXout3-	LVDS TXD3-
3	TXCLKout+	LVDS TXCLK+
4	TXCLKout-	LVDS TXCLK-
5	TXout2+	LVDS TXD2+
6	TXout2-	LVDS TXD2-
7	TXout1+	LVDS TXD1+
8	TXout1-	LVDS TXD1-
9	TXout0+	LVDS TXD0+
10	TXout0-	LVDS TXD0-
11	GND	Ground
12	TXD1	UART TX (5V)
13	RXD1	UART RX (5V)
14	DC12in	12V DC
15	DC12in	12V DC
16	DC12in	12V DC
17	DC12in	12V DC
18	DC12in	12V DC
19	GND	Ground
20	GND	Ground
21	GND	Ground
22	GND	Ground
23	GND	Ground
24	GND	Ground
25	-	Reserved
26	-	Reserved
27	VBS	Analog Video
28	-	Reserved
29	-	Reserved
30	RS485EN1	RS485 Enable (5V)

JP2 (53261-0671/MOLEX)		
1	DC12in	12V DC
2	GND	Power Ground
3	VBS	Analog Video
4	GND	Video Ground
5	IRext	ICR Control
6	VDO	Sensor VD Pulse

JP3 (SM06B-SRSS-TB/JST)		
1	ENTER	OSD Enter
2	RIGHT	OSD Right
3	LEFT	OSD Left
4	UP	OSD Up
5	DOWN	OSD Down
6	GND	Ground

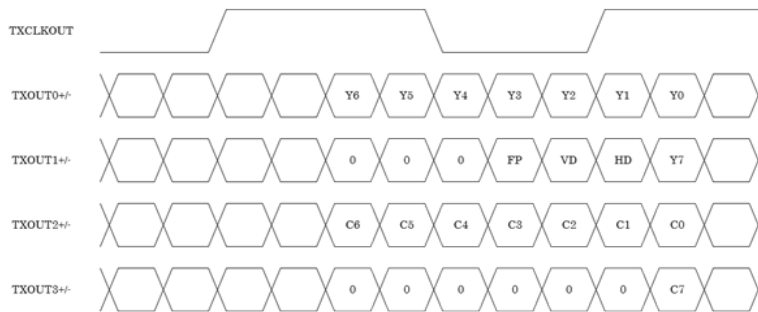
JP4 (SM05B-SRSS-TB/JST)		
1	GND	Ground
2	TXD2	UART TX (3.3V)
3	RXD2	UART RX (3.3V)
4	DC33out	3.3V DC
5	RS485EN2	RS485 Enable (3.3V)

JP8 (AYU1-1P-02676-120/JST)		
1	TX-SDI	SDI TX
2	GND	Video Ground

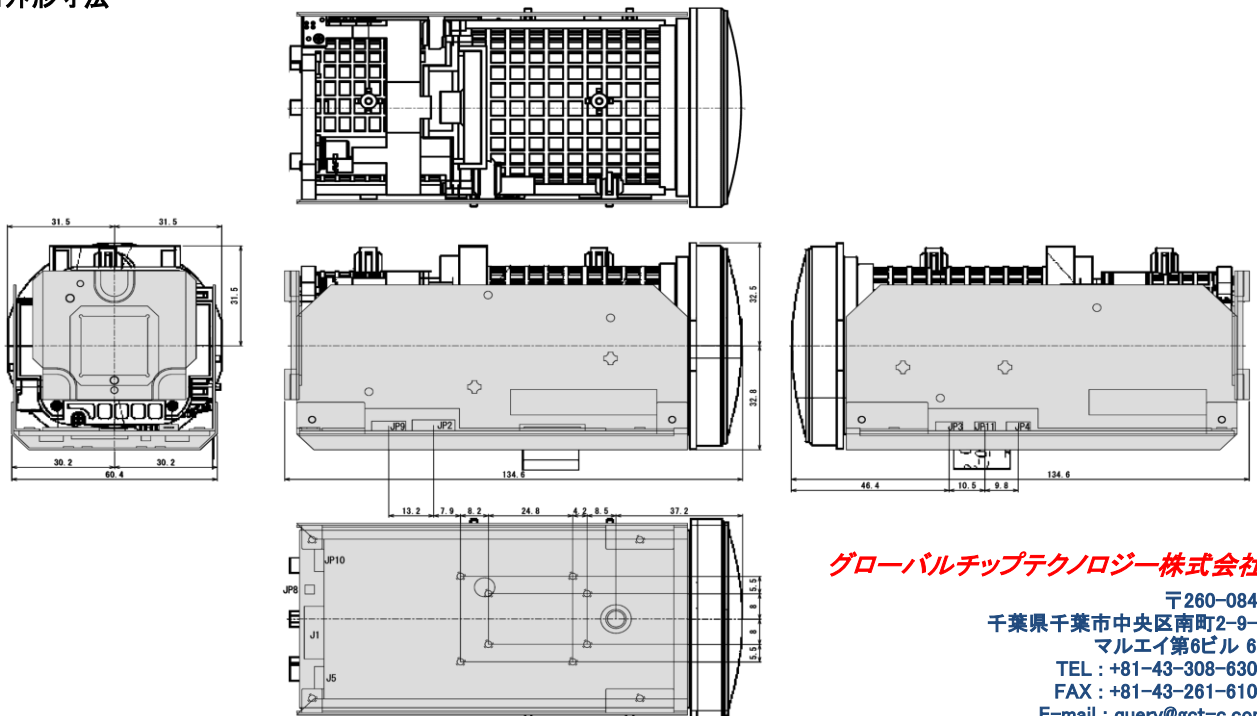
JP11 (SM04B-SRSS-TB/JST)		
1	DC33out	3.3V DC
2	ARin	Audio R
3	ALin	Audio L
4	AGND	Ground

(Option)

■LVDSフォーマット



■外形寸法



グローバルチップテクノロジー株式会社

〒260-0842
 千葉県千葉市中央区南町2-9-4
 マルエイ第6ビル 6F
 TEL : +81-43-308-6300
 FAX : +81-43-261-6100
 E-mail : query@got-c.com