

# GSM302MN

## 1/1.2" Global Shutter CMOS Camera Module



### ■ Overview

- Full-HD camera module with SONY 1/1.2" global shutter sensor.
- Dedicated ICR filter module compatible (visible light cut filter can be installed).

### ■ Feature

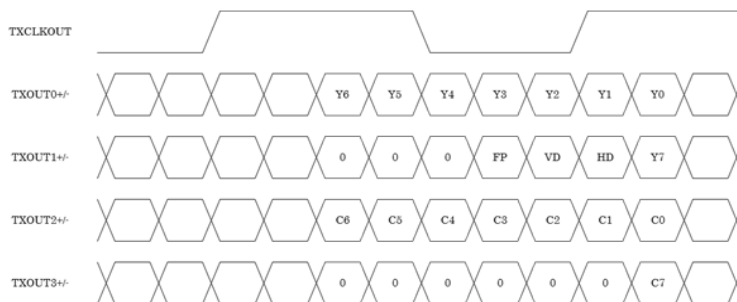
- Traffic monitoring camera module with global shutter sensor.
- Supports DC iris control.
- Equipped with auto iris, auto electronic shutter, auto gain, and auto white balance.
- Supports auto ICR operation, automatically switching from daytime color images to nighttime near-infrared images.
- Supports 32x digital zoom.
- Equipped with various correction functions according to the image scene (DNR, WDR, fog, heat haze, etc.).
- Compatible with LVDS output, allowing easy connection to network modules.
- Supports 3G-SDI/HD-SDI output, enabling long-distance wiring up to 100m without image quality degradation.
- Supports 1080p, 1080i, 720p video formats.
- Flexible support for additional functions.

**Global Chip Technology Corp.**  
2-9-4-6F, Maruei-No.6 BLDG.  
Minami-cho, Chuo-ku, Chiba-Shi  
Chiba-Ken, Japan 〒260-0842  
TEL : +81-43-308-6300  
FAX : +81-43-261-6100  
E-mail : info@gct-c.com

## ■ Specifications

Sensor	Image Sensor	1/1.2" Global Shutter CMOS Image Sensor (IMX302 LQJ-C)
	Scan Format	1920x1080@30fps, 1920x1080@25fps, 1920x1080@60fps, 1920x1080@50fps (Option 1920x1080@29.97fps, 1920x1080@59.94fps)
Video	Video Format	HD-SDI : 1080p30, 1080p25, 1080i60, 1080i50, 720p60, 720p50, 720p30, 720p25 (Option 1080p29.97, 1080i59.94, 720p59.94, 720p29.97)
		LVDS : 1080p30, 1080p25, 1080i60, 1080i50, 720p60, 720p50, 720p30, 720p25 (Option 1080p29.97, 1080i59.94, 720p59.94, 720p29.97)
		VBS : NTSC / PAL
	Minimum Illumination	Color : 0.02lx@F1.2 (AGC 48dB), B/W : 0.01lx@F1.2 (AGC 42dB)
	Signal to Noise Ratio	STD 52dB (Minimum 48dB)
Function	Setting	OSD, UART
	Auto DC Lens Iris	Yes
	Auto Exposure	1/34000 to 1/30(25) sec.
	Manual Shutter	1/30(25), 1/50, 1/60, 1/100, 1/120, 1/150, 1/180, 1/250, 1/350, 1/500, 1/750, 1/1000, 1/2000, 1/4000, 1/10000, 1/34000sec.
	Sense Up	AGC Max 60dB & Slow Shutter Max 8 sec.
	Day & Night Mode	Color / B&W / Auto / External
	White Balance	AUTO / ATW / AWB (One Push)
	Digital Noise Reduction	2D + 3D (Coupled Motion ON/OFF)
	Backlight Control	Yes
	Peak / Average Control	Yes
	Gamma Control	0.45 / 0.65 / 1.00 (Auto Setup ON/OFF)
	Digital Wide Dynamic Range	Off / Low / Mid / High
	Expanded High-Dynamic Range	Off / Low / Mid / High
	Eclipse (High Light Clip)	Yes
	Fog Reduction	Yes
	Heat Haze Correction	Yes
	Motion Detection	Yes
	OSD Language	English, Japanese (Customizable)
	Communication Format	Original / Pelco-D / Pelco-P / VISCA
Privacy Mask	Yes(16 Masks)	
Synchronous Mode	Internal	
General	Power Source	+12Vdc
	Consumption Current	420mA
	Operation Temperatur	-10°C ~ 45°C
	Storage Temperatur	-30°C ~ 70°C
	Humidity	80% MAX'
	Dimmentions	see diagram below

## ■ LVDS Format



**Global Chip Technology Corp.**  
 2-9-4-6F, Maruei-No.6 BLDG.  
 Minami-cho, Chuo-ku, Chiba-Shi  
 Chiba-Ken, Japan 〒260-0842  
 TEL : +81-43-308-6300  
 FAX : +81-43-261-6100  
 E-mail : info@gct-c.com

