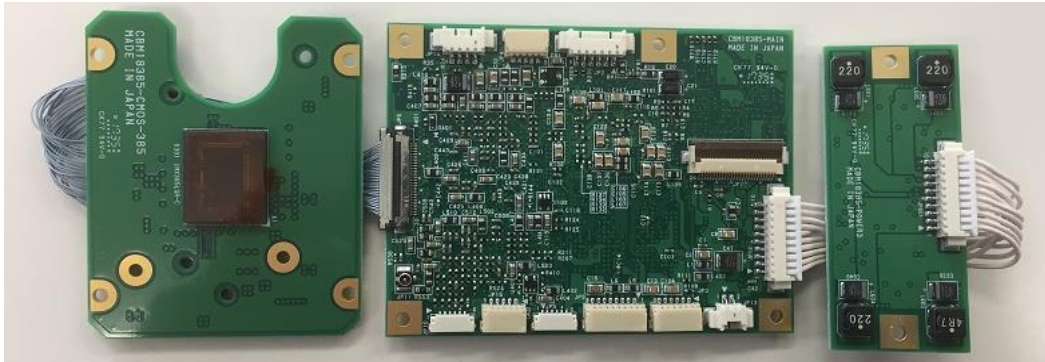


CBM385DC

1/2" High Sensitivity CMOS Camera Module



■ Overview

- Full-HD camera module equipped with SONY high-sensitivity color image sensor.
- Dedicated ICR filter module compatible (visible light cut filter can be installed).

■ Feature

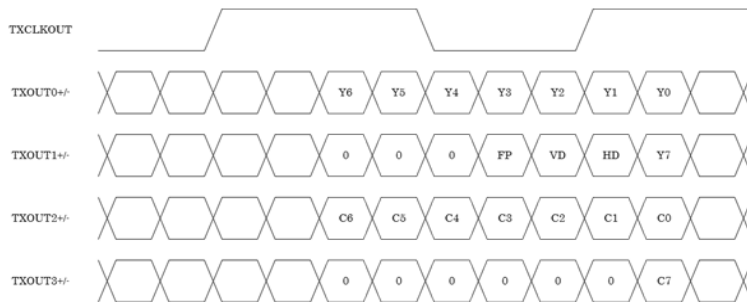
- Equipped with a high-sensitivity, low-noise sensor.
- Supports DC iris control.
- Equipped with auto iris, auto electronic shutter, auto gain, and auto white balance.
- Supports auto ICR operation, automatically switching from daytime color images to nighttime near-infrared images.
- Supports 32x digital zoom.
- Equipped with various correction functions according to the image scene (DNR, WDR, fog, heat haze, etc.).
- Compatible with LVDS output, allowing easy connection to network modules.
- Supports 3G-SDI/HD-SDI output, enabling long-distance wiring up to 100m without image quality degradation.
- Supports 1080p, 1080i, 720p video formats.
- Flexible support for additional functions.

Global Chip Technology Corp.
2-9-4-6F, Maruei-No.6 BLDG.
Minami-cho, Chuo-ku, Chiba-Shi
Chiba-Ken, Japan 〒260-0842
TEL : +81-43-308-6300
FAX : +81-43-261-6100
E-mail : info@gct-c.com

■ Specifications

Sensor	Image Sensor	1/2" SONY CMOS Image Sensor (IMX385LQR-C)
	Scan Format	1920x1080@30fps, 1920x1080@25fps, 1920x1080@60fps, 1920x1080@50fps (Option 1920x1080@29.97fps, 1920x1080@59.94fps)
Video	Video Format	HD-SDI : 1080p30, 1080p25, 1080i60, 1080i50, 720p60, 720p50, 720p30, 720p25 (Option 1080p29.97, 1080i59.94, 720p59.94, 720p29.97)
		LVDS : 1080p30, 1080p25, 1080i60, 1080i50, 720p60, 720p50, 720p30, 720p25 (Option 1080p29.97, 1080i59.94, 720p59.94, 720p29.97)
		VBS : NTSC / PAL
	Minimum Illumination	Color : 0.01lx@F1.2 (AGC 48dB), B/W : 0.003lx@F1.2 (AGC 42dB)
	Signal to Noise Ratio	STD 52dB (Minimum 48dB)
Function	Setting	OSD, UART
	Auto DC Lens Iris	Yes
	Auto Exposure	1/34000 to 1/30(25) sec.
	Manual Shutter	1/30(25), 1/50, 1/60, 1/100, 1/120, 1/150, 1/180, 1/250, 1/350, 1/500, 1/750, 1/1000, 1/2000, 1/4000, 1/10000, 1/34000sec.
	Sense Up	AGC Max 60dB & Slow Shutter Max 8 sec.
	Day & Night Mode	Color / B&W / Auto / External
	White Balance	AUTO / ATW / AWB (One Push)
	Digital Noise Reduction	2D + 3D (Coupled Motion ON/OFF)
	Backlight Control	Yes
	Peak / Average Control	Yes
	Gamma Control	0.45 / 0.65 / 1.00 (Auto Setup ON/OFF)
	Digital Wide Dynamic Range	Off / Low / Mid / High
	Expanded High-Dynamic Range	Off / Low / Mid / High
	Eclipse (High Light Clip)	Yes
	Fog Reduction	Yes
	Heat Haze Correction	Yes
	Motion Detection	Yes
	OSD Language	English, Japanese (Customizable)
	Communication Format	Original / Pelco-D / Pelco-P / VISCA
	Privacy Mask	Yes(16 Masks)
Synchronous Mode	Internal	
General	Power Source	+12Vdc
	Consumption Current	350mA
	Operation Temperaturer	-10°C ~ 45°C
	Storage Temperaturer	-30°C ~ 70°C
	Humidity	80% MAX'
	Dimmensions	see diagram below

■ LVDS Format



Global Chip Technology Corp.
 2-9-4-6F, Maruei-No.6 BLDG.
 Minami-cho, Chuo-ku, Chiba-Shi
 Chiba-Ken, Japan 〒260-0842
 TEL : +81-43-308-6300
 FAX : +81-43-261-6100
 E-mail : info@gct-c.com

Pin Assignment

JP6 (USL00-30L-A/KEL)		
1	TXout3+	LVDS TXD3+
2	TXout3-	LVDS TXD3-
3	TXCLKout+	LVDS TXCLK+
4	TXCLKout-	LVDS TXCLK-
5	TXout2+	LVDS TXD2+
6	TXout2-	LVDS TXD2-
7	TXout1+	LVDS TXD1+
8	TXout1-	LVDS TXD1-
9	TXout0+	LVDS TXD0+
10	TXout0-	LVDS TXD0-
11	GND	Ground
12	TXD1	UART TX (5V)
13	RXD1	UART RX (5V)
14	DC12in	12V DC
15	DC12in	12V DC
16	DC12in	12V DC
17	DC12in	12V DC
18	DC12in	12V DC
19	GND	Ground
20	GND	Ground
21	GND	Ground
22	GND	Ground
23	GND	Ground
24	GND	Ground
25	-	Reserved
26	-	Reserved
27	VBS	Analog Video
28	-	Reserved
29	-	Reserved
30	RS485EN1	RS485 Enable (5V)

JP2 (53398-0671/MOLEX)		
1	DC12in	12V DC
2	GND	Power Ground
3	VBS	Analog Video
4	GND	Video Ground
5	IRext	ICR Control
6	GND	Ground

JP3 (BM06B-SRSS-TB/JST)		
1	ENTER	OSD Enter
2	RIGHT	OSD Right
3	LEFT	OSD Left
4	UP	OSD Up
5	DOWN	OSD Down
6	GND	Ground

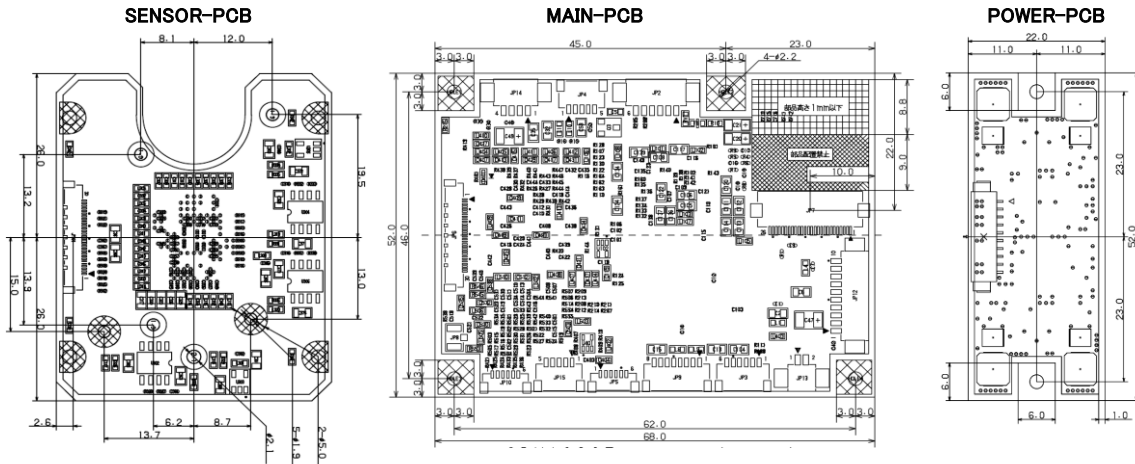
JP4 (BM05B-SRSS-TB/JST)		
1	GND	Ground
2	TXD2	UART TX (3.3V)
3	RXD2	UART RX (3.3V)
4	DC33out	3.3V DC
5	RS485EN2	RS485 Enable (3.3V)

JP8 (AYU1-1P-02676-120/JST)		
1	TX-SDI	SDI TX
2	GND	Video Ground

JP13 (53398-0271/MOLEX)		
1	IRDRV1	IR Drive 1
2	IRDRV2	IR Drive 2

JP14 (53398-0471/MOLEX)		
1	DCDAMP-	DC Lens Damp -
2	DCDAMP+	DC Lens Damp +
3	DCDRV+	DC Lens Drive +
4	DCDRV-	DC Lens Drive -

Dimensions



Global Chip Technology Corp.

2-9-4-6F, Maruei-No.6 BLDG.

Minami-cho, Chuo-ku, Chiba-Shi

Chiba-Ken, Japan 〒260-0842

TEL : +81-43-308-6300

FAX : +81-43-261-6100

E-mail : info@gct-c.com